



MA Dance & Auxiliaries
 PO Box 940605
 Plano, TX 75094
 800-977-7933
 www.madance.com
 www.maux.com

PRSRV STD
 U.S. POSTAGE
 PAID
 DALLAS, TX
 PERMIT #1233

2011 DANCE & AUXILIARY CHAMPIONSHIPS

DANCE & AUXILIARY CHAMPIONSHIPS



December 11, 2010	Holiday Classic - Brazoswood HS	Clute, TX
January 22, 2011	Midwest Regional 1 - S. Sioux City HS	S. Sioux City, NE
January 23, 2011	Ohio Classic - Westerville Central HS	Westerville, OH
January 29, 2011	Midwest Regional 2 - SE Polk HS	Pleasant Hill, IA
February 5, 2011	Texas State Championship - Bowie HS	Austin, TX
February 12, 2011	North Texas Regional 1 - Grapevine HS	Grapevine, TX
February 12, 2011	Houston Regional 1 - Sam Rayburn HS	Pasadena, TX
February 18-19, 2011	Houston Regional 2 - Klein Oak HS	Houston, TX
February 26, 2011	East Texas Regional - Chapel Hill HS	Tyler, TX
February 26, 2011	San Antonio Regional - Champion HS	Boerne, TX
March 5, 2011	North Texas Regional 2 - Liberty HS	Frisco, TX
March 5, 2011	Southeast Regional - Seminole HS	Orlando, FL
March 12, 2011	Gulf Coast Regional - Grace King HS	New Orleans, LA
March 12, 2011	South Texas Regional - Carroll HS	Corpus Christi, TX

MARCH 25-26, 2011 NATIONAL CHAMPIONSHIP

Fort Worth Convention Center Fort Worth, TX

CONTEST 2011

14 CHAMPIONSHIP LOCATIONS

Nationals

March 25-26

Travel Discounts p. 7

**Team, Officer
Solo & Ensemble
Divisions**

**Awards in 13
Categories!**

21 Team Classes!

**ALL DIGITAL
JUDGING
CRITIQUES**

**Dancers
Twirlers p. 4
Color Guard p. 4**

**CAN YOU
WIN THE
JACKETS?**

“where the elite compete!”



2011 Competitions

Regionals • Classics • State

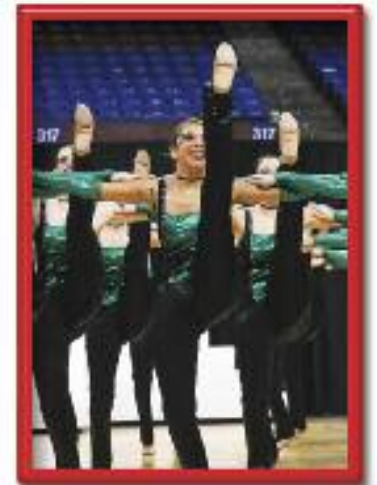


REGIONAL COMPETITIONS

ENTRY FEES: (PER ROUTINE)	TEAM	OFFICER	LARGE ENS 5+ DANCERS	SMALL ENS DUET/TRIO/QT	SOLO
	\$215	\$180	\$175	\$140	\$80
JAN 22, 2011	MIDWEST REGIONAL 1 - SOUTH SIOUX CITY HS				S. SIOUX CITY, NE
JAN 29, 2011	MIDWEST REGIONAL 2 - SE POLK HS				PLEASANT HILL, IA
FEB 5, 2011	TEXAS STATE CHAMPIONSHIP - BOWIE HS				AUSTIN, TX
	TEXAS STATE PRICING LISTED SEPARATELY BELOW				
FEB 12, 2011	NORTH TEXAS REGIONAL 1 - GRAPEVINE HS				GRAPEVINE, TX
FEB 12, 2011	HOUSTON REGIONAL 1 - SAM RAYBURN HS				PASADENA, TX
FEB 18-19, 2011	HOUSTON REGIONAL 2 - KLEIN OAK HS				HOUSTON, TX
FEB 26, 2011	EAST TEXAS REGIONAL - CHAPEL HILL HS				TYLER, TX
FEB 26, 2011	SAN ANTONIO REGIONAL - CHAMPION HS				BOERNE, TX
MAR 5, 2011	NORTH TEXAS REGIONAL 2 - LIBERTY HS				FRISCO, TX
MAR 5, 2011	SOUTHEAST REGIONAL - SEMINOLE HS				ORLANDO, FL
MAR 12, 2011	GULF COAST REGIONAL - GRACE KING HS				NEW ORLEANS, LA
MAR 12, 2011	SOUTH TEXAS REGIONAL - CARROLL HS				CORPUS CHRISTI, TX

CLASSIC COMPETITIONS

ENTRY FEES: (PER ROUTINE)	TEAM	OFFICER	LARGE ENS 5+ DANCERS	SMALL ENS DUET/TRIO/QT	SOLO
	\$135	\$85	\$85	\$65	\$55
DEC 11, 2010	HOLIDAY CLASSIC - BRAZOSWOOD HS				CLUTE, TX
JAN 23, 2011	OHIO CLASSIC - WESTERVILLE CENTRAL HS				WESTERVILLE, OH



TX STATE SOLO, OFFICER, & ENSEMBLE CHAMPIONSHIP

ENTRY FEES: (PER ROUTINE)	TEAM	OFFICER	LARGE ENS 5+ DANCERS	SMALL ENS DUET/TRIO/QT	SOLO
	\$215	\$190	\$190	\$150	\$85

FEB 5, 2011 TEXAS STATE CHAMPIONSHIP - BOWIE HS AUSTIN, TX
 AWARD JACKETS FOR TOP OFFICER LINE, SOLOISTS, & ENSEMBLE GROUPS
NEW TEAM COMPETITION WITH REGIONAL AWARDS!



Dance Championships

PROFESSIONAL ♦ IMPARTIAL ♦ PROFICIENT ♦ EDUCATIONAL



where you can achieve your dreams!

DANCE CLASSIFICATIONS

- ♦ PUBLIC HIGH SCHOOL *DIVISIONS
- ♦ PRIVATE HIGH SCHOOL
- ♦ HIGH SCHOOL JV
- ♦ HIGH SCHOOL ELITE
- ♦ HIGH SCHOOL PEP SQUAD
- ♦ HIGH SCHOOL ALL MALE
- ♦ HIGH SCHOOL COED
- ♦ JR HIGH/MIDDLE SCHOOL
- ♦ ALL STAR/STUDIO **DIVISIONS
- ♦ OFFICER LINES
- ♦ DANCE ENSEMBLES
- ♦ SOLO COMPETITORS
- ♦ JR HIGH SCHOOL ALL MALE
- ♦ JR HIGH SCHOOL COED

*PUBLIC HS DIVISIONS

TEAM SIZE IS UTILIZED TO DETERMINE PUBLIC HS AND THEIR OFFICER LINE DIVISIONS **ONLY!**

- ♦ SMALL 4-15
- ♦ MEDIUM 16-29
- ♦ LARGE 30-49
- ♦ SUPER 50+
- ♦ HS ELITE 10-24

COED, ALL-MALE, PRIVATE HS, JUNIOR HS, ALLSTAR/STUDIO AND INTERNATIONAL ARE **NOT** DIVIDED BY TEAM SIZE



**ALL STAR DIVISIONS

- ♦ PRE K - KINDERGARTEN
- ♦ 1ST - 3RD GRADE
- ♦ 4TH - 6TH GRADE
- ♦ 7TH - 9TH GRADE
- ♦ 9TH - 12TH GRADE
- ♦ HS GRAD+
- ♦ INTERNATIONAL **NEW!**

COMPETITIVE CATEGORIES

- ♦ JAZZ
- ♦ PROP
- ♦ NOVELTY
- ♦ HIGH KICK
- ♦ SHOW PRODUCTION
- ♦ LYRICAL
- ♦ HIP HOP
- ♦ MILITARY
- ♦ SPECIALITY
- ♦ MODERN
- ♦ POM
- ♦ OPEN
- ♦ CONTEMPORARY **NEW THIS YEAR!**

SOLO AGE DIVISIONS

- ♦ PRE K - KINDERGARTEN
- ♦ 1ST - 3RD GRADE
- ♦ 4TH - 6TH GRADE
- ♦ 7TH - 8TH GRADE
- ♦ 9TH - 10TH GRADE
- ♦ 11TH - 12TH GRADE
- ♦ HS GRAD+

SCHOLARSHIPS & AWARDS - THE MOST IN THE DANCE INDUSTRY!

- ♦ SUPERIOR TROPHIES
- ♦ SWEEPSTAKES TROPHIES
- ♦ SUPER SWEEPSTAKES TROPHIES
- ♦ ENSEMBLE TROPHIES & MEDALS
- ♦ OUTSTANDING DANCER TROPHIES & MEDALS
- ♦ OUTSTANDING DANCER SCHOLARSHIPS
- ♦ HIGH POINT DANCE CATEGORY PLAQUES
- ♦ SPECIALITY ROUTINE TROPHIES
- ♦ SHOW PRODUCTION TROPHIES
- ♦ BEST IN CLASS PLAQUES
- ♦ CHOREOGRAPHY PLAQUES
- ♦ OUTSTANDING DANCE TECHNIQUE PLAQUES
- ♦ WINNER'S CIRCLE OFFICER TROPHIES
- ♦ WINNER'S CIRCLE TEAM TROPHIES

GO TO WWW.MADANCE.COM FOR COMPLETE DANCE COMPETITION RULES



Dance Classics & TX State Info

HOLIDAY CLASSIC

DECEMBER 11, 2010
BRAZOSWOD HS CLUTE, TX

THESE ARE GREAT CONTESTS TO PREPARE YOUR TEAM, OFFICERS, SOLOS, AND ENSEMBLES FOR THE COMPETITION YEAR. RECEIVE PROFESSIONAL JUDGING WITH OUR NEW DIGITAL CRITIQUES AND ALL THE AMENITIES OF ANY MA REGIONALS AT PRICES THAT FIT ANY BUDGET. HERE ARE THE TOP 6 REASONS TO ATTEND THESE SPECIALTY DANCE CHAMPIONSHIPS:

- ◆ GREAT FACILITIES AND HOST TEAM HOSPITALITY
- ◆ COMPETITION FEES AT REDUCED COSTS
- ◆ SAME FABULOUS MA AWARDS AS OTHER REGIONALS
- ◆ COMPETITION FOR ALL AGES, ALL-STAR & PUBLIC SCHOOL DANCERS
- ◆ OUTSTANDING SOLO COMPETITION IN SEVEN DIFFERENT AGE GROUPS
- ◆ AUXILIARY EVENTS FOR COLOR GUARDS, WINTER GUARDS, & TWIRLERS

OHIO CLASSIC

JANUARY 23, 2011
WESTERVILLE CENTRAL HS COLUMBUS, OH

ENTRY FEES ARE:

TEAM EVENTS	\$135
OFFICER ROUTINES	\$ 85
LARGE ENSEMBLES	\$ 85
SMALL ENSEMBLES	\$ 65
SOLOS	\$ 55



TEXAS STATE DANCE CHAMPIONSHIP

FEBRUARY 5, 2011 BOWIE HS AUSTIN, TX

OUR 11TH ANNUAL SOLO, OFFICER, & ENSEMBLE TEXAS STATE CLASSIC IS THE ONLY ONE IN THE INDUSTRY THAT AWARDS LETTER JACKETS TO THE TOP WINNERS IN THE COMPETITION.

FEATURES OF THE TEXAS STATE CHAMPIONSHIP INCLUDE:

- ◆ **NEW** FULL REGIONAL CONTEST AND AWARDS FOR TEAM DIVISIONS
- ◆ COMPETITION FOR ALL AGES, ALL-STAR SQUADS, PUBLIC & PRIVATE SCHOOL DANCERS
- ◆ OUTSTANDING SOLO COMPETITION IN SEVEN DIFFERENT AGE GROUPS
- ◆ LETTER JACKETS FOR ALL SOLO WINNERS: PRE K-KINDERGARTEN, 1ST-3RD GRADE, 4TH-6TH GRADE, 7TH-8TH GRADE, 9TH-10TH GRADE, 11TH-12TH GRADE, & HS GRAD+
- ◆ LETTER JACKETS TO THE HIGHEST SCORING OFFICER LINE AND HIGHEST SCORING LARGE AND SMALL DANCE ENSEMBLES FOR THE ENTIRE COMPETITION



STATE CHAMPION JACKETS FOR:

ALL SOLO WINNERS
HIGHEST SCORING OFFICERS
HIGHEST SCORING
LARGE AND SMALL
ENSEMBLES

DANCE ENTRY FEES FOR TX STATE ARE:

TEAM EVENTS	\$215	SMALL ENSEMBLES	\$150
OFFICER ROUTINES	\$190	SOLOS	\$ 85
LARGE ENSEMBLES	\$190		

Auxiliary Championships 2011

Regionals and Nationals



TEAM DIVISIONS (TEAMS CONSIST OF 5 OR MORE)

- ◆ TEAM FLAG
- ◆ TEAM FLAG AND RIFLE
- ◆ MAJORETTE TEAM TWIRL
- ◆ WINTER GUARD SHOW
- ◆ TEAM RIFLE
- ◆ MAJORETTE DANCE TWIRL

ENSEMBLE COMPETITIONS (2-4 PERFORMERS ONLY!)

- ◆ SMALL MAJORETTE ENSEMBLE
- ◆ SMALL COLOR GUARD ENSEMBLE

REGIONAL AWARDS

- ◆ SUPERIOR TROPHIES FOR ALL DIVISION I RATED TEAMS (SCORING 85 OR HIGHER)
- ◆ MEDALS FOR SUPERIOR RATED ENSEMBLE MEMBERS & SOLOISTS
- ◆ 1ST, 2ND, & 3RD PLACES FOR COLOR GUARD & MAJORETTE ENSEMBLES & SOLOS
- ◆ BEST-IN-CLASS PLAQUES FOR THE HIGHEST SCORING FLAGS, MAJORETTES, & WG
- ◆ CHOREOGRAPHY AWARDS IN EACH TEAM DIVISION

NATIONAL AWARDS

- ◆ MEDALS FOR SUPERIOR RATED ENSEMBLE MEMBERS & SOLOISTS
- ◆ NATIONAL 1ST, 2ND, & 3RD PLACE TROPHIES FOR COLOR GUARD AND MAJORETTE ENSEMBLES AND SOLOS
- ◆ SPECIAL NATIONAL CHAMPIONSHIP TROPHIES FOR TEAM PLACEMENT
- ◆ NATIONAL CHAMPION JACKETS FOR THE WINNING SENIOR COLOR GUARD AND TWIRLING SOLO CHAMPIONS

GUIDELINES FOR ROUTINES

1. Team routines should be from 2 minutes and 30 seconds to 3 minutes in length. Ensembles should not exceed 2 minutes and 30 seconds in length.
2. Solo routines should be limited to 2 minutes & not exceed 2 minutes and 15 seconds in length.
3. Winter Guard Productions may be up to 10 minutes in length, which includes set up & break down.
4. Music must be recorded on compact discs. Bring back up music in case technical difficulties arise.
5. Facilities for Team Auxiliary Performances will be on a gymnasium floor which measures 96' x 50'. Solos & ensembles may be held in a smaller gym, ballroom, or stage. However, ceilings will be tall enough to avoid any performance problems.

Professional judges will provide digital audio critiques for all team, ensemble, and solo performances. At Nationals, Team routines will also receive a video of their performance with audio judging critiques.

Note: Small ensembles for color guards and twirlers consist of 2-4 performers only. Any group with 5 or more participants must enter the team division.

ENTRY FEES	CLASSICS	REGIONALS	NATIONALS
◆ TEAM ROUTINES	\$135	\$195	\$245
◆ SMALL ENSEMBLES	\$ 85	\$145	\$160
◆ SOLO ROUTINES	\$ 50	\$ 70	\$ 85

Visit www.MAux.com for more details and online registration forms 4

Dance Nationals 2011



Fort Worth Convention Center

DANCE CLASSIFICATIONS

- ◆ PUBLIC HIGH SCHOOL*(SEE DIVISIONS⇒)
- ◆ ALL STAR/STUDIO ***(SEE DIVISIONS⇒)
- ◆ PRIVATE HIGH SCHOOL
- ◆ HIGH SCHOOL JV
- ◆ HIGH SCHOOL ELITE
- ◆ HIGH SCHOOL PEP SQUAD
- ◆ HIGH SCHOOL ALL MALE
- ◆ HIGH SCHOOL COED
- ◆ JR HIGH/MIDDLE SCHOOL
- ◆ JR HIGH SCHOOL ALL MALE
- ◆ JR HIGH SCHOOL COED
- ◆ OFFICER LINES
- ◆ DANCE ENSEMBLES
- ◆ SOLO COMPETITORS

*PUBLIC HIGH SCHOOLS

TEAM SIZE IS UTILIZED TO DETERMINE PUBLIC HS AND THEIR OFFICER LINE DIVISIONS ONLY

- ◆ SMALL 4-15
- ◆ MEDIUM 16-29
- ◆ LARGE 30-49
- ◆ SUPER 50+
- ◆ HS ELITE 10-24

COED, ALL MALE, PRIVATE HS, JUNIOR HIGH, ALL STAR/STUDIO & INTERNATIONAL GROUPS ARE **NOT** DIVIDED BY TEAM SIZE

Complete National Rules, Awards, and General Information at www.madance.com

**ALL STAR STUDIO DIVISIONS

- ◆ PRE K - KINDERGARTEN
- ◆ 1ST - 3RD GRADE
- ◆ 4TH - 6TH GRADE
- ◆ 7TH - 9TH GRADE
- ◆ 9TH - 12TH GRADE
- ◆ HS GRAD+
- ◆ INTERNATIONAL **NEW!**

COMPETITIVE DANCE CATEGORIES

- ◆ JAZZ
- ◆ LYRICAL
- ◆ MODERN
- ◆ PROP
- ◆ HIP HOP
- ◆ POM
- ◆ NOVELTY
- ◆ MILITARY
- ◆ HIGH KICK
- ◆ SHOW PRODUCTION
- ◆ OPEN
- ◆ SPECIALTY

NEW THIS YEAR ◆ CONTEMPORARY CATEGORY

DANCE SOLO AGE DIVISIONS

- ◆ PRE K - KINDERGARTEN
- ◆ 1ST - 3RD GRADE
- ◆ 4TH - 6TH GRADE
- ◆ 7TH - 8TH GRADE
- ◆ 9TH - 10TH GRADE
- ◆ 11TH - 12TH GRADE
- ◆ HS GRAD+

ENTRY FEES: (PER ROUTINE)	TEAM	OFFICER	LARGE ENS 5+ DANCERS	SMALL ENS DUET/TRIO/QT	SOLO
	\$295	\$215	\$190	\$150	\$90

March 25-26, 2011



The One To Win!

★★ NATIONAL FACILITIES ★★

- ◆ INCREDIBLE 10,500 SEAT ARENA
- ◆ EASY UNLOADING, ASSEMBLY AND STORAGE FOR PROPS
- ◆ SPACIOUS AND CONVENIENT GARAGE PARKING
- ◆ NUMEROUS EATERIES WITHIN WALKING DISTANCE
- ◆ 4-5 STAR GUEST HOTEL ACCOMMODATIONS (SEE PAGE 7)
- ◆ EASILY ACCESSIBLE TO DFW & LOVE FIELD AIRPORTS
- ◆ WONDERFUL TOURIST ATTRACTIONS (SEE PAGE 7)
- ◆ THE FABULOUS ATMOSPHERE OF MA NATIONALS!

NATIONAL CHAMPIONSHIP JACKETS

in Nine Different Dance Divisions!

ONE SET OF NATIONAL CHAMPIONSHIP JACKETS WILL BE AWARDED TO THE TOP SCORING TEAM FROM THE FOLLOWING DIVISIONS:

- ◆ ALL STAR/STUDIO PRE K - 6TH GRADE
- ◆ ALL STAR/STUDIO 7TH - HS GRAD+
- ◆ JUNIOR HIGH SCHOOL **NEW THIS YEAR!**
- ◆ HIGH SCHOOL SMALL
- ◆ HIGH SCHOOL MEDIUM
- ◆ HIGH SCHOOL LARGE
- ◆ HIGH SCHOOL SUPER
- ◆ TOP SCORING OFFICER LINE
- ◆ TOP SCORING SOLOIST IN ALL SEVEN AGE DIVISIONS

JACKETS WILL ALSO BE AWARDED TO ANY OTHER TEAM CLASSIFICATIONS WITH 8 ELIGIBLE ENTRIES

NATIONAL SCHOLARSHIPS & AWARDS

- ◆ NATIONAL OUTSTANDING DANCER TROPHIES & CASH SCHOLARSHIPS
- ◆ NATIONAL DUET, TRIO, QUARTET & LARGE ENSEMBLE TROPHIES AND MEDALS IN ALL AGE DIVISIONS
- ◆ NATIONAL 1ST, 2ND, AND 3RD PLACE TROPHIES FOR ALL TEAM COMPETITIVE DIVISIONS IN ALL DANCE CATEGORIES (1ST THROUGH 6TH PLACE TROPHIES IF 11 OR MORE TEAMS ARE COMPETING IN A DANCE CATEGORY)
- ◆ NATIONAL WINNER'S CIRCLE TROPHIES-PUBLIC SCHOOL & OFFICERS
- ◆ NATIONAL WINNER'S CIRCLE TROPHIES-ALL STAR & OFFICERS
- ◆ NATIONAL TOP TECHNIQUE TROPHIES-PUBLIC SCHOOL & OFFICERS
- ◆ NATIONAL TOP TECHNIQUE TROPHIES-ALL STAR & OFFICERS

TRAVEL INFORMATION ON PAGE 7!



NATIONALS TRAVEL

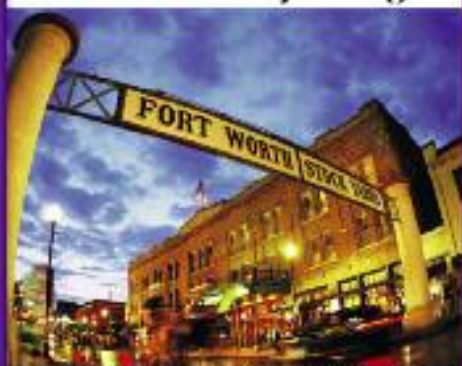
Destination - Fort Worth, Texas



Ft Worth Convention Center



Texas Motor Speedway



Ft Worth Stock Yards



Ft Worth Zoo

FORT WORTH, TEXAS IS A THRIVING CENTER OF CULTURE AND COMMERCE. VISITORS ARE OFTEN SURPRISED BY EVERYTHING FORT WORTH HAS TO OFFER: THE HISTORIC STOCKYARDS, REMARKABLE MUSEUMS, A DAZZLING DOWNTOWN AREA, TEXAS MOTOR SPEEDWAY, SPECTACULAR ANNUAL EVENTS AND A LOT MORE! JOIN US IN FORT WORTH, TEXAS FOR THE 2011 MA NATIONALS!

MA DANCE AND AUXILIARIES HAVE SECURED THE FOLLOWING AMMENITIES AS A **LIMITED TIME SPECIAL OFFER TO GROUPS WHO BOOK BEFORE NOVEMBER 15TH WITH THE 4 DOWNTOWN FORT WORTH HOST HOTELS: HILTON, COURTYARD MARRIOTT, OMNI, AND SHERATON.**

- BREAKFAST INCLUDED AT ALL 4 HOTELS, COMPLIMENTS OF MA, ONLY THROUGH THIS LIMITED-TIME OFFER!
- 15% OFF ALL CONTEST ENTRY FEES FOR TEAMS WHO BOOK IN THE MA BLOCK AT ANY ONE OF THESE 4 HOTELS BY NOVEMBER 15TH.

THIS OFFER IS GOOD UNTIL THE DEADLINE DATE 11/15/2010 OR UNTIL THE MA BLOCK IS FILLED, WHICHEVER COMES FIRST! BOOK EARLY!

TO TAKE ADVANTAGE OF THIS OFFER, FOLLOW THE STEPS OUTLINED BELOW:

- **CALL, EMAIL OR BOOK THOUGH OUR WEBSITE. CONTACT INFO IS AVAILABLE BELOW, OR CLICK ON THE 2011 Host HOTELS LINK ON OUR MA WEBSITE.**
- **BOOK ALL YOUR ROOMS USING THE SPECIFIC CODE FOR THE MA BLOCK AT THAT HOTEL. PLEASE INCLUDE YOUR SPECTATORS, PARENTS, & FRIENDS IN YOUR MA BLOCK ROOMING TO BE INCLUDED IN THE BREAKFAST SPECIAL.**
- **RESERVATIONS WILL BE HELD WITH A CREDIT CARD – NOTHING WILL BE CHARGED BEFORE JANUARY 23, 2011.**
- **ROOMING LIST WILL BE DUE ON OR BEFORE JANUARY 23, 2011.**
- **FINAL NON-REFUNDABLE PAYMENT FOR MA BLOCK IS DUE FEB. 23, 2011.**
- **SCHOOL & BOOSTER CHECKS CAN ALSO BE USED FOR FINAL PAYMENT.**
- **RATES AND ROOMS SUBJECT TO AVAILABILITY.**

ONCE THE HOST HOTEL HAS CONFIRMED THAT YOU HAVE BOOKED IN THE MA BLOCK, THE 15% DISCOUNT WILL BE APPLIED TO YOUR CONTEST ENTRY.

THE FOLLOWING ARE THE 4 HOST HOTELS FOR MA NATIONALS.
RESERVATION CUT-OFF DATE IS JANUARY 23, 2011!

HILTON FORT WORTH HOTEL MA RATE \$149
815 MAIN STREET, FORT WORTH, TX 76102
RESERVATIONS PHONE NUMBER: 817-870-2100
MA REFERENCE CODE: **MAD**

THE COURTYARD BY MARRIOTT/ BLACKSTONE MA RATE \$149
601 MAIN STREET, FORT WORTH, TX 76102
RESERVATIONS PHONE NUMBER: 800-321-2211
MA REFERENCE CODE: **MADMADA (KING) MAMADB (2 QUEEN)**

OMNI FORT WORTH HOTEL MA RATE \$199
1300 HOUSTON STREET, FORT WORTH, TX 76102
RESERVATIONS PHONE NUMBER: 800-THE-OMNI (800-843-6664)
MA REFERENCE CODE: **MA BLOCK**

SHERATON FORT WORTH HOTEL AND SPA MA RATE \$145
1701 COMMERCE STREET, FORT WORTH, TX 76102
RESERVATIONS PHONE NUMBER: 800-325-3535
MA REFERENCE CODE: **MADANCE**

PHOTOS COURTESY OF FT WORTH CONVENTION & VISITORS BUREAU





NEW FOR SOLO COMPETITORS

Soloist will receive a free video of their performance on flash drive!

WILL CONTINUE TO OFFER BROADCAST LEVEL QUALITY HIGH-END VIDEO PRODUCTS FOR OUR 2011 CHAMPIONSHIPS. 5 STAR MEDIA 800-838-4955 WWW.5STARMEDIAHD.COM

All Digital Judges' Critiques

MA CHAMPIONSHIPS WILL FEATURE OUR EXPERT JUDGING CRITIQUES ON FLASH DRIVES PROVIDED FOR TEAMS, OFFICERS, ENSEMBLES, AND SOLOISTS! TEAMS WILL ALSO RECEIVE A VIDEO CRITIQUE FROM ONE OF OUR JUDGES AT NATIONALS & OTHER SELECT COMPETITIONS. IT'S A GREAT ADDITION TO OUR ALREADY INCREDIBLE JUDGING SYSTEM!



CHAMPION IMAGES IS THE OFFICIAL EVENT PHOTOGRAPHER OF MA! CHAMPION OFFERS A WIDE VARIETY OF PHOTO IMAGING OPTIONS INCLUDING:

- LIVE ACTION EXPERT EVENT PHOTOGRAPHY
- FULL SCREEN LAPTOP VIEWING OF PHOTOS AFTER YOUR PERFORMANCE
- ON SITE PROFESSIONAL PRINTING

WWW.CHAMPIONIMAGE.COM



SUMMER CAMPS 2011



dance and team building!

MA DANCE OFFERS THE MOST OUTSTANDING TRAINING AT OUR SUMMER CAMPS AND PLANS TO ADD SOME GREAT NEW FACETS FOR 2011!

WE WILL BE OFFERING THE FOLLOWING:

- FREE SUMMER DANCE DVD OF ALL 70+ ROUTINES
- FABULOUS DANCE INSTRUCTORS AND CHOREOGRAPHERS
- CUSTOM CHOREOGRAPHY FOR TEAMS WITH 10 OR MORE DANCERS ATTENDING
- 60 CD ROUTINES FOR PEP RALLY, BASKETBALL, CONTEST, & SPRING SHOW
- 10 DYNAMIC CUSTOM FIELD READY ROUTINES TO CURRENT BAND MUSIC
- JAZZ, POM, HIP HOP, KICK, MILITARY, MODERN, LYRICAL, CONTEMPORARY AND PROP ROUTINES TAUGHT TO THE LATEST CD MUSIC
- TECHNIQUE WORKSHOPS AND FABULOUS DIRECTOR SEMINARS
- RIBBON EVALUATIONS, SPIRIT AWARDS, HOME ROUTINE, GRAND CHAMPION & OUTSTANDING DANCER COMPETITION
- INVITATIONS FOR MACY'S THANKSGIVING DAY PARADE, CAPITAL ONE BOWL HALFTIME, AND COTTON BOWL HALFTIME.

NEW! EVENING SESSIONS DEVOTED TO EMPHASIZING FUN, LEADERSHIP, TEAM BUILDING, AND GOAL SETTING.

MA DANCE CONDUCTS 150 PRIVATE SUMMER CAMPS AND SENDS ITS TOP INSTRUCTORS WHO PROVIDE AN EXCITING ATMOSPHERE AND CURRICULUM FOR YOU AT HOME! YOU WILL ENJOY ALL THE AMENITIES OF CAMP LISTED ABOVE AND FLEXIBLE SCHEDULING, AFFORDABLE PRICING, PERSONALIZED ATTENTION, AND A CURRICULUM DESIGNED JUST FOR YOU!



Visit us at www.madance.com for camp dates & locations or Call 800-977-7933 for a Private Camp quote!

REGIONAL & CLASSIC ENTRY FORM

Contest Attending: _____ Contest Date: _____
 School/Group/All-Star/Studio Name: _____
 Address _____ Phone () _____
 City _____ State _____ Zip _____ Fax () _____
 Director/Sponsor Name _____ Cell Phone () _____
 Team Nickname _____ Number on Team: _____

★ PLEASE PROVIDE AN E-MAIL ADDRESS TO RECEIVE THE CONTEST LETTER & SCHEDULE:
 School/Studio E-MAIL _____ Home E-MAIL _____

DANCE PERFORMANCES

REFER TO PAGE 1 FOR DANCE COMPETITION PRICES

◆ Team Routines - check categories below
 ___ Prop ___ Kick ___ Jazz # Routines Entering _____
 ___ Novelty ___ Pom ___ Military
 ___ Lyrical ___ Modern ___ Hip Hop
 ___ Open ___ Show Prod ___ Specialty ___ Contemporary
 Total Amount sent for Team Routines \$ _____ ●

◆ Officer Routines - check categories below
 ___ Prop ___ Kick ___ Jazz # Routines Entering _____
 ___ Novelty ___ Pom ___ Military
 ___ Lyrical ___ Modern ___ Hip Hop
 ___ Contemporary ___ Open
 Total Amount sent for Officer Routines \$ _____ ●

For the convenience of scheduling, please register as early as possible even if you do not know the specific names of your soloists or ensembles. You must submit your solo and ensemble names and grade levels 14 days before the competition you are attending.

◆ Dance Ensembles* - specify the number of routine entries in each category
 ___ Duets ___ Trios ___ Quartets # Routines Entering _____
 ___ Large Ensembles # Routines Entering _____
 Total Amount sent for Ensemble Routines \$ _____ ●

◆ Individual Dance Contestants* # Routines Entering _____
 Total Amount sent for Dance Soloists \$ _____ ●

Total Dance Registration Fees Enclosed: \$ _____ ●

◆ Team Classifications: Complete a separate registration form for each team entered! Check and/or circle the one appropriate classification.

Public HS Teams compete in the following classifications based on team size:
 4-15 members - Small Team 16-29 members - Medium Team
 30-49 members - Large Team 50 or more - Super Size Team

HS Elite Teams (10-24 members), HS Pep Squads & HS JR Varsity members must complete a separate registration form if their HS Varsity team is also competing. HS Pep, HS Elite, Junior High, Junior Varsity, Coed, All Male, Private, All Star and International teams are not separated by team size.

- ___ Pre K-Kindergarten All Star/Dance Studio (Pre K-K)
- ___ Elementary 1-3 All Star/Dance Studio (1-3)
- ___ Elementary 4-6 All Star/Dance Studio (4-6)
- ___ Junior All Star/Dance Studio (7-9)
- ___ Senior All Star/Dance Studio (9-12)
- ___ HS Grad+ All Star/Dance Studio
- ___ Junior High/Middle School
- ___ Junior High/Middle School All Male
- ___ Junior High/Middle School Coed
- ___ Private High School
- ___ Public High School All Male
- ___ Public High School Coed
- ___ Public High School Team: Small Medium Large Super
 (Circle One) HS Junior Varsity HS Elite HS Pep Squad
- ___ International Team (Non USA teams)

AUXILIARY PERFORMANCES

REFER TO PAGE 4 FOR AUXILIARY COMPETITION PRICES

◆ Team Routines - check categories below
 ___ Team Flag ___ Team Winter Guard
 ___ Team Rifle ___ Team Dance Twirl
 ___ Team Flag/Rifle ___ Team Twirl # Routines Entering _____
 Total Amount sent for Team Routines \$ _____ ●

For the convenience of scheduling, please register as early as possible even if you do not know the specific names of your soloists or ensembles. You must submit your solo and ensemble names and grade levels 14 days before the competition you are attending.

◆ Small Ensembles* - check categories below
 ___ Color Guard Ensembles # Routines Entering _____
 ___ Twirling Ensembles # Routines Entering _____
 Total Amount sent for Ensemble Routines \$ _____ ●

◆ Individual Auxiliary Contestants*
 # Color Guard Solos Entering _____
 # Twirling Solos Entering _____
 Total Amount sent for Auxiliary Soloists \$ _____ ●

Total Auxiliary Registration Fees Enclosed \$ _____ ●

IN ORDER TO RECEIVE A CONFIRMATION PACKET, YOU MUST FILL OUT THIS SECTION.

Name: (person to whom confirmation packet is to be emailed) _____

Street _____

City _____ State _____ Zip _____

Contact Phone () _____ Cell Phone () _____

FOUR WAYS TO REGISTER!

Mail: M.A. Dance / Marching Auxiliaries of America
 P.O. Box 940605 Plano, TX 75094

Phone: 1-800-977-7933 Fax: (972) 633-9737

Online: www.MAdance.com or www.MAux.com

Visa and MasterCard now accepted for registration!

Name on Card _____ CID _____

Card # _____ Exp. Date _____

Signature _____

Check one:   

2011 NATIONALS ENTRY FORM

Contest Attending: MA National Championship

Contest Date: March 25-26, 2011

School/Group/All-Star/Studio Name: _____

Address _____ Phone () _____

City _____ State _____ Zip _____ Fax () _____

Director/Sponsor Name _____ Cell Phone () _____

Team Nickname _____ Number on Team: _____

School/Studio E-MAIL _____ Home E-MAIL _____

★ PLEASE PROVIDE YOUR HOTEL ACCOMMODATIONS FOR YOUR TEAM, PARENT, & SPECTATOR ROOMS:

Hotel Name _____ Address _____ # of Rooms _____ # of Nights _____

DANCE PERFORMANCES

◆ Team Routines - check categories below

___ Prop ___ Kick ___ Jazz # Routines Entering _____
 ___ Novelty ___ Pom ___ Military times \$295 per routine
 ___ Lyrical ___ Modern ___ Hip Hop
 ___ Open ___ Show Prod ___ Specialty ___ Contemporary

Total Amount sent for Team Routines \$ _____ ●

◆ Officer Routines - check categories below

___ Prop ___ Kick ___ Jazz # Routines Entering _____
 ___ Novelty ___ Pom ___ Military times \$215 per routine
 ___ Lyrical ___ Modern ___ Hip Hop
 ___ Contemporary ___ Open

Total Amount sent for Officer Routines \$ _____ ●

For the convenience of scheduling, please register as early as possible even if you do not know the specific names of your soloists or ensembles. You must submit your solo and ensemble names and grade levels by March 1, 2011.

◆ Dance Ensembles* - specify the number of routine entries in each category

___ Duets ___ Trios ___ Quartets # Routines Entering _____
 times \$150 per routine
 ___ Large Ensembles # Routines Entering _____
 times \$190 per routine

Total Amount sent for Ensemble Routines \$ _____ ●

◆ Individual Dance Contestants* # Routines Entering _____
 times \$90 per routine

Total Amount sent for Dance Soloists \$ _____ ●

Total Dance Registration Fees Enclosed: \$ _____ ●

◆ Team Classifications: Complete a separate registration form for each team entered! Check and/or circle the one appropriate classification.

Public HS Teams compete in the following classifications based on team size:

4-15 members - Small Team 16-29 members - Medium Team
 30-49 members - Large Team 50 or more - Super Size Team

HS Elite Teams (10-24 members), HS Pep Squads & HS JR Varsity members must complete a separate registration form if their HS Varsity team is also competing. HS Pep, HS Elite, Junior High, Junior Varsity, Coed, All Male, Private, All Star and International teams are not separated by team size.

- _____ Pre K-Kindergarten All Star/Dance Studio (Pre K-K)
- _____ Elementary 1-3 All Star/Dance Studio (1-3)
- _____ Elementary 4-6 All Star/Dance Studio (4-6)
- _____ Junior All Star/Dance Studio (7-9)
- _____ Senior All Star/Dance Studio (9-12)
- _____ HS Grad+ All Star/Dance Studio
- _____ Junior High/Middle School
- _____ Junior High/Middle School All Male
- _____ Junior High/Middle School Coed
- _____ Private High School
- _____ Public High School All Male
- _____ Public High School Coed
- _____ Public High School Team: Small Medium Large Super
- _____ (Circle One) HS Junior Varsity HS Elite HS Pep Squad
- _____ International Team (Non USA teams)

AUXILIARY PERFORMANCES

◆ Team Routines - check categories below # Routines Entering _____

___ Team Flag ___ Team Winter Guard times \$245 per routine
 ___ Team Rifle ___ Team Dance Twirl
 ___ Team Flag/Rifle ___ Team Twirl

Total Amount sent for Team Routines \$ _____ ●

For the convenience of scheduling, please register as early as possible even if you do not know the specific names of your soloists or ensembles. You must submit your solo and ensemble names and grade levels by March 1, 2011.

◆ Small Ensembles* - check categories below

___ Color Guard Ensembles # Routines Entering _____
 times \$160 per routine
 ___ Twirling Ensembles # Routines Entering _____
 times \$160 per routine

Total Amount sent for Ensemble Routines \$ _____ ●

◆ Individual Auxiliary Contestants*

Color Guard Solos Entering _____ times \$85 per solo _____
 # Twirling Solos Entering _____ times \$85 per solo _____

Total Amount sent for Auxiliary Soloists \$ _____ ●

Total Auxiliary Registration Fees Enclosed: \$ _____ ●

IN ORDER TO RECEIVE A CONFIRMATION PACKET,
 YOU MUST FILL OUT THIS SECTION.

Name: (Person to whom confirmation packet is to be emailed)

Street _____

City _____ State _____ Zip _____

Contact Phone () _____ Cell Phone () _____

FOUR WAYS TO REGISTER!

Mail: M.A. Dance / Marching Auxiliaries of America
 P.O. Box 940605 Plano, TX 75094

Phone: 1-800-977-7933 Fax: (972) 633-9737

Online: www.MAdance.com or www.MAux.com

See Important Nationals Travel Information on Page 7!

Visa and MasterCard now accepted for registration!

Name on Card _____ CID _____

Card # _____ Exp. Date _____

Signature _____

Check one:   